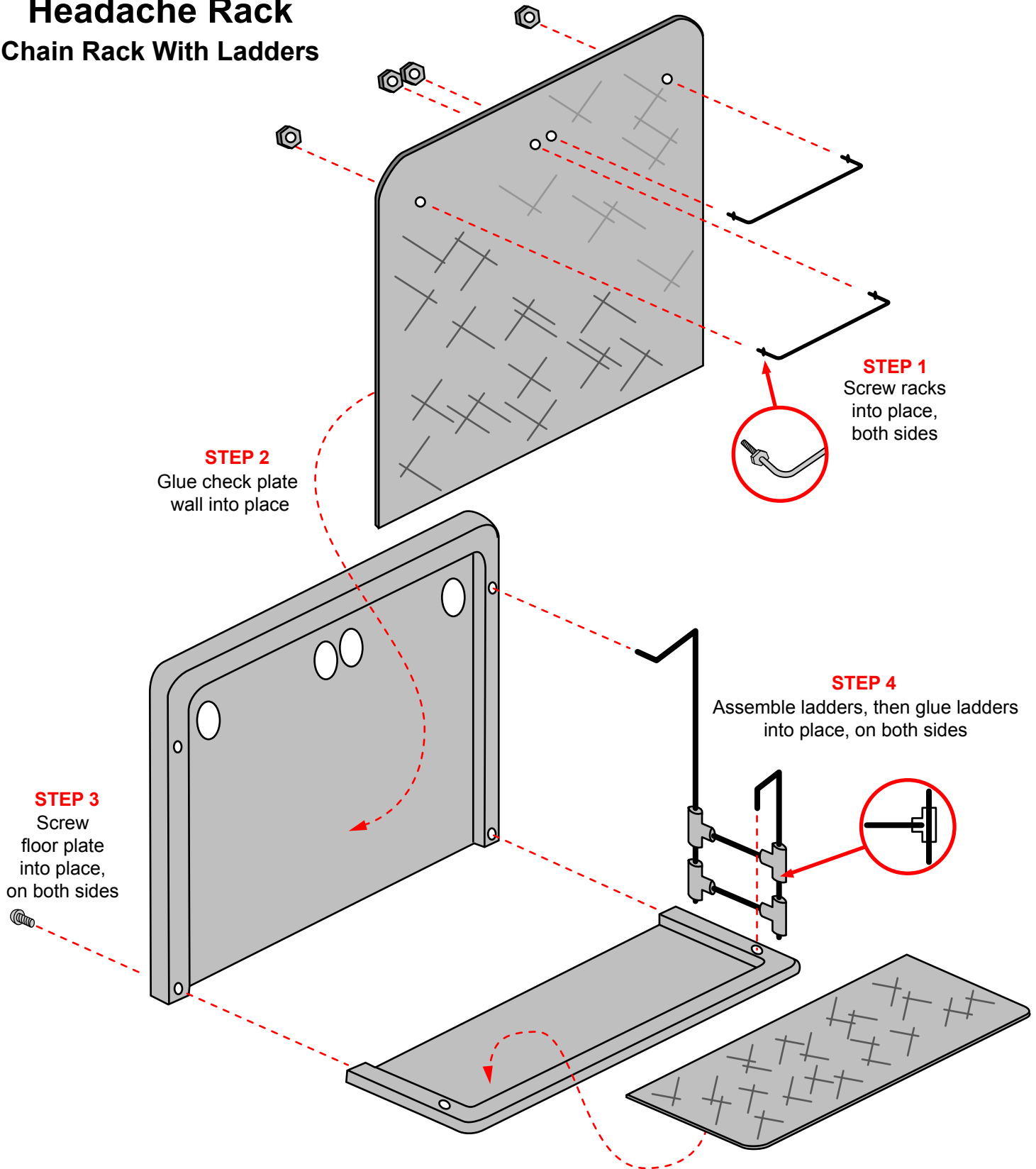


#1003

Headache Rack

Chain Rack With Ladders



STEP 1
Screw racks
into place,
both sides

STEP 2
Glue check plate
wall into place

STEP 3
Screw
floor plate
into place,
on both sides

STEP 4
Assemble ladders, then glue ladders
into place, on both sides

STEP 5 Glue check plate floor into place after the unit has been mounted to the truck. As you may have to drill mount holes, due to the many variations of truck designs, this is left up to the builder.